

Overview

- Outstanding reliability and unrivalled immunity against ambient light
- Easy to adjust via line teach
- Intuitive Xpress Teach / 1-Step Teach method
- Robust housing with stainless steel spacer sleeves



Picture similar



Technical data

General data

Type	Background suppression
Light source	Pulsed red LED
Sensing distance Tw	15 ... 80 mm
Sensing range Tb	7 ... 80 mm
Smallest object recognizable typ.	0,25 mm at 40 mm
Alignment / soiled lens indicator	Flashing output indicator
Power on indication	LED green
Output indicator	LED yellow
Sensing distance adjustment	External Teach-in / 1-Step Teach-in
Wave length	644 nm
Suppression of reciprocal influence	Yes
Alignment optical axis	< 1,5°

Electrical data

Response time / release time	< 1 ms
Voltage supply range +Vs	10 ... 30 VDC
Current consumption max. (no load)	20 mA (@ 30 VDC)

Electrical data

Current consumption typ.	16 mA (@ 24 VDC)
Voltage drop Vd	< 2 VDC
Output function	Light operate
Output circuit	Push-pull
Output current	< 50 mA
Short circuit protection	Yes
Reverse polarity protection	Yes

Mechanical data

Width / diameter	8 mm
Height / length	25,1 mm
Depth	14,1 mm
Type	Rectangular
Mechanical mounting	Sleeve smooth (stainless steel)
Housing material	Plastic (ASA, PMMA)
Front (optics)	PMMA
Connection types	Cable 4 pin, 2 m
Cable characteristics	PVC / PVC 4 x 0,08 mm ²

Ambient conditions

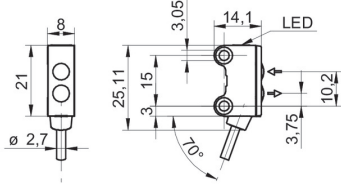
Protection class	IP 67
Operating temperature	-25 ... +50 °C

O200.GR-GL1E.72CV/T007

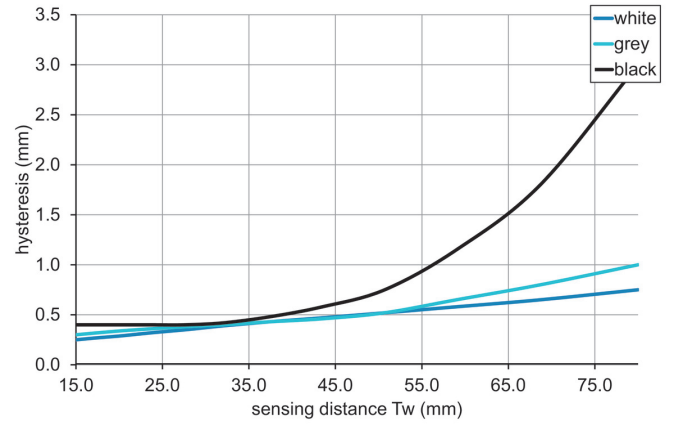
Diffuse sensors with background suppression - miniature

Article number: 11210543

Dimension drawing



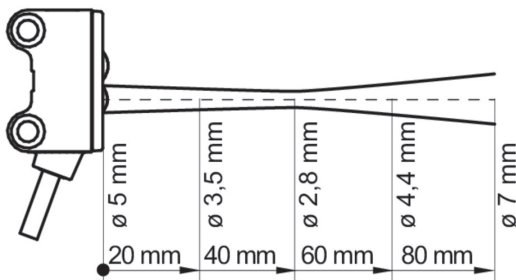
Hysteresis curve



Connection diagram



Beam characteristic (typically)



Sensing distance diagram

